

**HIGHWAY ADVISORY COMMISSION
MEETING MINUTES
January 18, 2017**

MEMBERS PRESENT: Reb Williams, Ed Dills, Don Martinez, Cheryl Everitt, Tom Vierzba, Joan Lucia-Treese, Joe Ennis, Jean Meinzer, Jim Mesite, Larry Tobias, Brian Galpin

MEMBERS ABSENT: Jane Dillon

OTHERS PRESENT: Stan VanderWerf (EPC County Commissioner), Jim Reid (EPC DPW), Jennifer Irvine (EPC DPW), Victoria Chavez (EPC DPW), Troy Wiitala (EPC DPW), Ellen Heaverlo (EPC DPW), Jennifer Valentine (PPACG)

1. CALL MEETING TO ORDER

- Chair Williams called the meeting to order at 9:02 AM.

2. MOTION (Ms. Lucia-Treese/Ms. Everitt) to excuse absence of Ms. Dillon. MOTION CARRIED UNANIMOUSLY.

3. MEETING MINUTES

- **MOTION (Ms. Lucia-Treese/Mr. Galpin)** to approve minutes of the December 21, 2016 meeting. **MOTION CARRIED UNANIMOUSLY.**

4. SUNSHINE LAW REQUIREMENTS

- The Sunshine Law Memo was read into the record by Ms. Lucia-Treese. **MOTION (Ms. Everitt/Mr. Tobias)** to adopt the memo. **MOTION CARRIED UNANIMOUSLY.**

5. COMMISSIONER/CITIZEN COMMENTS

- Mr. Williams welcomed County Commissioner, District 3 Stan VanderWerf.
- Commissioner VanderWerf introduced himself.

6. STAFF REPORTS

A. ADMINISTRATION

Jim Reid (Executive Director, Department of Public Works)

- Mr. Reid briefed the commission on the recent wind event and the subsequent damages. Highway crews responded quickly and efficiently to mitigate damages, such as sign replacements and the removal of trees that toppled and obstructed roads. Commissioner VanderWerf expressed his concerns that large highway signs on steel posts had been snapped in half by the force of the wind, and suggested looking into whether these signs meet current standards for strength and durability.
- Mr. Reid also informed the commission of the assistance the Highway Division provided to Leadville in form of a snowplow and a front end loader, as well as operators for both, to help them remove an excessive amount of snow from their roadsides.
- The increased visibility of the new green truck color was briefed.
- There are plans to mount snow blades on some of the $\frac{3}{4}$ ton supervisor trucks to enable personnel to plow in tighter areas, such as cul-de-sacs where a regular size snow plow may have difficulty plowing.
- Mr. Reid reminded those on the commission that have volunteered that the workgroup to discuss road issues/improvements is meeting next week on Jan 25th. Ms. Heaverlo will send a reminder with an attached agenda. Mr. Williams invited Commissioner VanderWerf to attend.
- Responses to citizens' complaints were discussed. Mr. Galpin asked in what form complaints are received. Mr. Reid advised him that complaints are received via phone calls, emails, letters and office walk-ins. Phone calls are recorded for accuracy and timeliness of response and are logged into the dispatch daily log.

B. ENGINEERING DIVISION

Jennifer Irvine (County Engineer, Department of Public Works)

- Ms. Irvine presented the commission with an overview of the Engineering Division's 2016 accomplishments.
- A possible revision to road acceptances from developers was discussed. Engineering staff will review and reassess the current policies.

C. HIGHWAY DIVISION

Troy Wiitala (Highway Division Manager, Department of Public Works)

- Mr. Wiitala presented the commission with an overview of the Highway Division's 2016 accomplishments.
- The new Personal Protective Equipment (jackets) for DPW was shown to the commission. It consists of an outer jacket and a liner that are both highly visible and meet all the required ANSI/ISEA standards. It will replace the safety vests that have been worn over regular jackets.
- The Entry Level Maintenance Worker program was discussed.

7. LONG RANGE TRANSPORTATION PLAN DRAFT GOALS PRESENTATION

Jennifer Valentine (PPACG)

- Ms. Valentine asked the commission for input for the plan that will need to be completed and approved by November 2019 (2050 Plan). A discussion took place.

8. NOMINATION OF HIGHWAY ADVISORY COMMISSION OFFICERS

- **MOTION (Ms. Lucia-Treese/Ms. Everitt)** to nominate Mr. Dills for Chair. Mr. Dills did not accept the nomination. **MOTION WITHDRAWN.**
- **MOTION (Mr. Dills/Mr. Galpin)** to nominate Mr. Vierzba for Chair. **MOTION CARRIED UNANIMOUSLY.**
- **MOTION (Ms. Lucia-Treese/Mr. Vierzba)** to nominate Mr. Dills for Vice Chair. **MOTION CARRIED UNANIMOUSLY.**
- **MOTION (Ms. Lucia-Treese/Ms. Everitt)** to close nominations for Chair and Vice Chair. **MOTION CARRIED UNANIMOUSLY.**
- **MOTION (Ms. Lucia-Treese/Mr. Dills)** to nominate Ms. Everitt for Secretary. **MOTION CARRIED UNANIMOUSLY.**
- **MOTION (Ms. Lucia-Treese/Mr. Dills)** to close nominations for Secretary. **MOTION CARRIED UNANIMOUSLY.**

9. ADJOURNMENT

This meeting was adjourned at 11:08 AM.

Copies of the presentations are attached to the minutes

Respectfully submitted,

Ellen Heaverlo
Office Manager – Department of Public Works

EL PASO



COUNTY

COMMISSIONERS:
DARRYL GLENN (PRESIDENT)
MARK WALLER (PRESIDENT PRO
TEMPORE)

STAN VANDERWERF
LONGINOS GONZALEZ JR
PEGGY LITTLETON

Department of Public Works

ADA/Safety ~ Facilities ~ Fleet ~ Security and Parking ~ Transportation ~
Office of Emergency Management/Hazardous Materials Team

MEMORANDUM

TO: Megan Astrella, County Administration
Vicki Ratterree, Clerk to the Board Manager

FROM: Ellen Heaverlo, Highway Advisory Commission Liaison
and Recording Secretary

RE: Highway Advisory Commission Sunshine Act Compliance

DATE: January 18, 2017

Pursuant to guidelines established by the Board of County Commissioners for compliance with the Colorado Open Public Meeting Sunshine Act, the following information addresses the section whereby each County board shall notify the Clerk to the Board of the name and office location of the official custodian of board minutes.

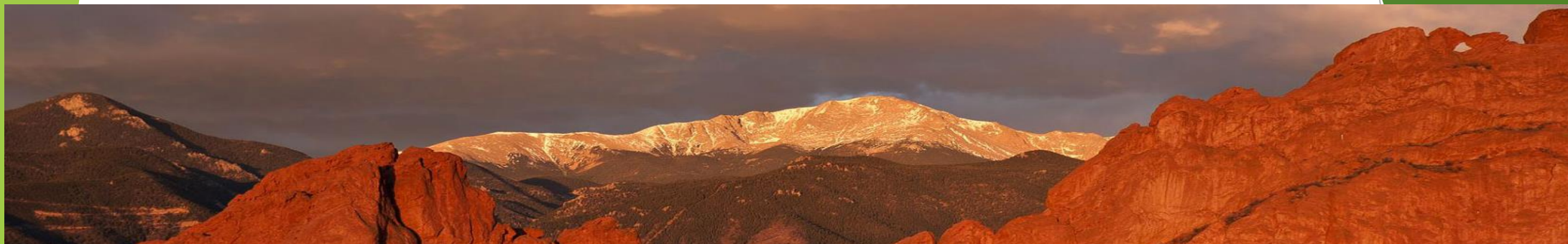
To this end, we hereby inform you that the El Paso County Department of Public Works is the official custodian of the El Paso County Highway Advisory Commission meeting minutes. The electronic records of all meeting minutes are on file at the Department of Public Works facility located at 3275 Akers Drive, Colorado Springs, Colorado, 80922, and are available at this location for public review.

Ellen Heaverlo or her designee shall be responsible for ensuring that appropriate notice of monthly Highway Advisory Commission meetings are forwarded to the County's official bulletin board located at 200 S. Cascade Avenue. Notice will be given in the form of an agenda which will state the date, time, and place of the monthly meetings or any other meetings in which compliance with the Sunshine Act is required. The agenda will also be posted on the Department of Public Works website.

This procedure for compliance with the Sunshine Act was discussed and approved by the El Paso County Highway Advisory Commission on January 19, 2017 for the 2017 calendar year.

Please contact me if you have questions or need additional information.





El Paso County Highway Advisory Commission

*Jennifer E. Irvine P.E., MPA
County Engineer*



18 January 2017

2016-Adopted Documents & Plans

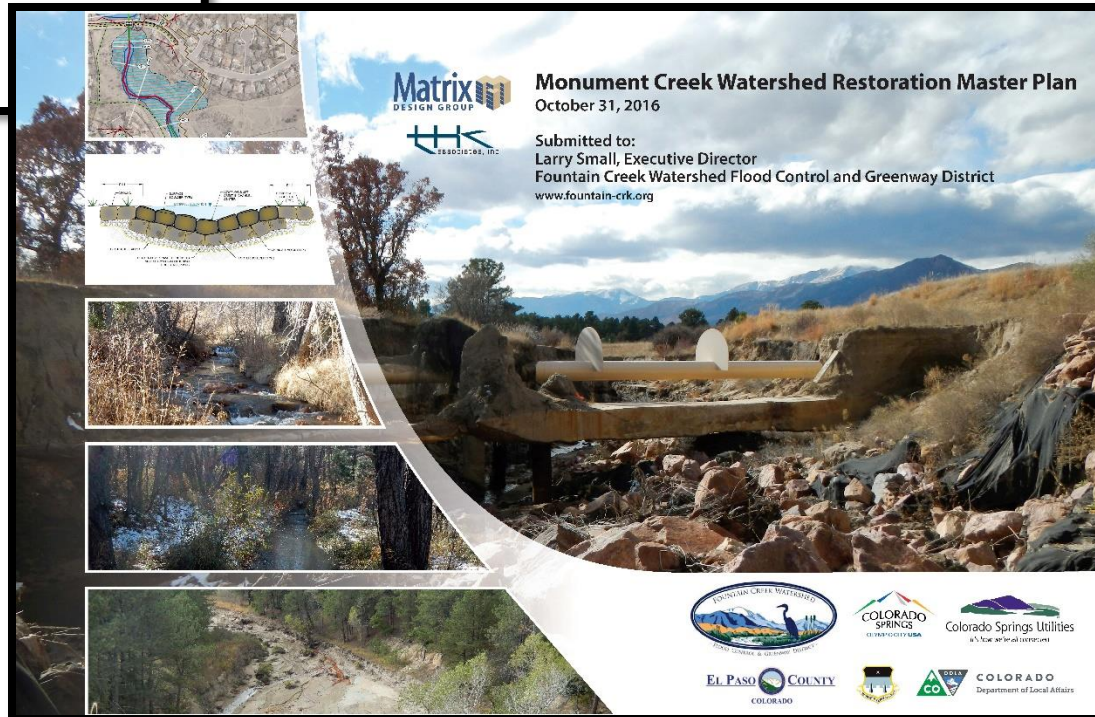
Road Impact Fee Study Update



duncan | associates



Adopted December 15, 2016



2016-Completed Projects



2016-Projects Under Construction



2016-Contracted Maintenance



2016-Parks Support



2016-Fire/Flood Recovery



2016-Permitting & Annual Inspections

Colorado Department of Transportation
Structure Inspection and Inventory Report (English Units)

Highway Number (ON) 5D: 00000 V
Mile Post (ON) 11: 0.000 mi

Bridge Key: EPC0476-03.68 Inspection Date: 03/03/2016 Sufficiency Rating: 78 ND

NBI Reporting ID:	EPC0476-03.68	Hist Signif 37:	5	UW Inspection Date 93B:	
Rgn/Sect 2E/2M:	24	Posting status 41:	A	SI Date 93C:	
Tran Region 2T:	01	Service on/Un 42A/B:	5 5	Bridge Cost 94:	\$0
County Code 3:	041	Main Mat/Desgn 43A/B:	6 02	Roadway Cost 95:	\$0
EL PASO		Appr Mat/Desgn 44A/B:	0 00	Total Cost 96:	\$0
Place Code 4:	00000	Main Spans Unit 45:	2	Year of Cost Estimate 97:	
non-city		Approach Spans 46:	0	Brdr Brdg Code% 98A/B:	-1
Rte.(On/Under) 5A:	1	Horiz Cir 47:	95.60 ft	Border Bridge Number 99:	
Signing Prefix 5B:	4	Max Span 48:	111.2 ft	Defense Highway 100:	0
Level of Service 5C:	1	Str Length 49:	231.0 ft	Parallel Structure 101:	N
Direction Suffix 5E:	0	Curb Width L/R 50A/B:	6.0 ft 0.0 ft	Direction of Traffic 102:	2
Feature Intersected 6:		Width Curb to Curb 51:	95.60 ft	Temporary Structure 103:	-
JIMMY CAMP CREEK		Width Out to Out 52:	105.3 ft	Highway Systems 104:	0
Facility Carried 7:		Deck Area:	24326	Fed Lands Hiway 105:	0
FONTAINE BLVD		Min Clr Cvr Brdg 53:	99.90	Year Reconstructed 106:	
Alias Str No. 8A:		Min Undrcr Ref 54A:	N	Deck Type 107:	1
		Min Undrcr 54B:	0.0 ft	Wearing Surface 108A:	1
Prt Str No. 8P:		Min Lat Cirrce Ref R 55A:	N	Membrane 108B:	0
N/A		Min Lat Undrcr R 55B:	0.0 ft	Deck Protection 108C:	1
Location 9:		Min Lat Undrcr L 56:	0.0 ft	Truck ADT 109:	4.00 %
0.3 MI E OF MARKSHEFFEL		Deck 58:	7	Trk Net 110:	0
Max Clr 10:	99.99	Super 59:	8	Pier Protection 111:	1
BaseHwy Net12:	0	Sub 60:	8	NBIS Length 112:	Y
InsrvtRout 13A:	0000000000	Channel/Protection 61:	8	Scour Critical 113:	8
InsrvtRout No13B:	00	Culvert 62:	N	Scour Watch 113M:	N
Latitude 16:	38d 44' 15.00"	Optng Rtg Method 63:	1 LF Load Fact	Future ADT 114:	5,628
Longitude 17:	104d 38' 41.00"	Operating Rating 64:	74.6	Year of Future ADT 115:	2033
Range 18A:		Inv Rtg Method 65:	1 LF Load Fact	CDOT Str Type 120A:	CPGC
Township 18B:		Inventory Rating 66:	46.6	CDOT Constr Type 120B:	41
Section 18C:		Asph/Fill Thick 66T:	0.0 in	Inspection Indic 122A:	-
Detour Length 19:	124 mi	Str. Evaluation 67:	8	Inspection Trip 122AA:	Unknown
Toll Facility 20:	3	Deck Geometry 68:	9	Scheduling Status 122B:	-
Custodian 21:	02	Undrcr Vert/Hor 69:	N	Maintenance Patrol 123:	0
Owner 22:	02	Posting 70:	5	Expansion Dev/Type 124:	0
Functional Class 26:	09	Waterway Adequacy 71:	8	Brdg Rail Type/Mod 125A/B:	S 1
Year Built 27:	2007	Approach Alignment 72:	8	Posting Trucks 129A/B/C:	0.0 0.0 0.0
Lanes on 28A:	4	Type Of Work 75A:	-1	Str Rating Date 130:	06/18/2008
Lanes Under 28B:	0	Work Done By 75B:	-	Special Equip 133:	Unknown
ADT 29:	3,540	Length of Improvement 76:	0	Vert Cir N/E 134A/B/C:	-1.00 -1.00
Year of ADT 30:	2013	Insp Team Indicator 90B:	BENESCH	Vert Cir S/W 135A/B/C:	-1.00 -1.00
Design Load 31:	5	Inspector Name 90C:	srodriguez	Vertical Cir Date:	01/01/1901
Apr Rdwy Width 32:	77.70 ft	Frequency 91:	24 months	Weight Limit Color 139:	0
Median 33:	2	FC Frequency 92A:		Str Billing Type:	IIC
Skew 34:	0 °	UW Frequency 92B:		Userkey 1 - System:	OFFSYS
Structure Flared 35:	0	SI Frequency 92C:		Userkey 4 - OffSys Sched:	Central FY EVN
Sfty Rail 36a/b/c/d:	1 0 0 0	FC Inspection Date 93A:		Userkey 5:	
Rail ht36h:	36.0 in			Userkey 7 - Update Ind.:	
				BridgeGroup	

Inspector Name: srodriguez

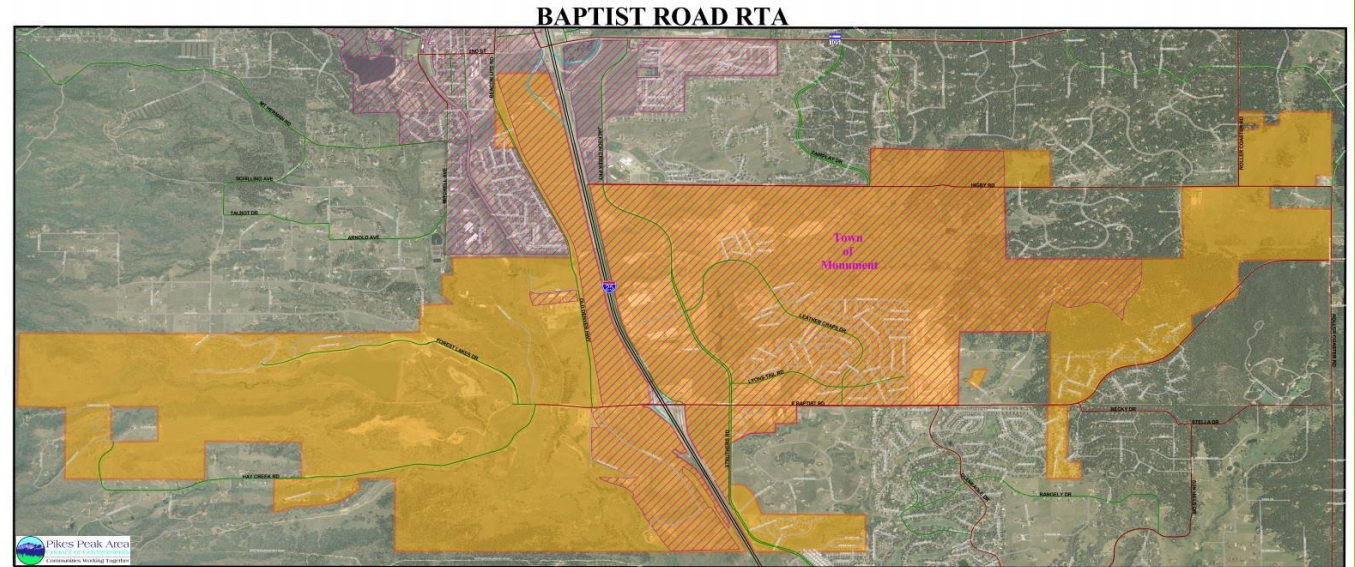
CDOT_SIA Version 8 - 02/26/16 Structure ID: EPC0476-03.68 Thu 05/19/2016 14:59:52 Page 1 of 4

687 Work in ROW Permits:

- ✓ Telecommunication Permits: 123
- ✓ Non-Telecommunication Permits: 446
- ✓ Special District Permits: 118



Baptist Road Rural Transportation Authority 1997-2016



I25 EA/Planning & Environmental Linkage Study

✓ Public Meetings Upcoming

✓ Colorado Springs

January 24, 2017 5-7 p.m.; 5:30 p.m. presentation
Pikes Peak Library 21c - The Venue Room 1175 Chapel Hills Drive

✓ Castle Rock

January 26, 2017 5-7 p.m.; 5:30 p.m. presentation
5-7 p.m.; 5:30 p.m. presentation
Douglas County Fairgrounds- Kirk Hall



www.codot.gov/projects/i-25-co-springs-denver-south-pel

Baptist Road West



APWA Project of the Year – Dennis Barron Project Manager



El Paso County Highway Advisory Commission



*Troy Wiitala
Highway Manager*

18 January 2017

2016 Program Completion Overview

Chip Seal Program

Dust Abatement Program

Graveling Program

Bridge Deck Replacements

Snow Removal Program

Customer Service Requests



2016 Chip Seal Program

Chip Seal Program

- ✓ **Completed 43.43 centerline miles**
- ✓ Prior to chip seal must patch and crack roads
- ✓ Completed additional crew training in 2016
- ✓ Average material cost per centerline mile is \$14,940
- ✓ Personnel cost increases 2-4 times in residential or mountainous areas
- ✓ Completion rate decreases 2-4 times in challenging areas
- ✓ Challenges in 2016
 - ✓ Weather (wet summer, late start)
 - ✓ Terrain (Steep terrain, narrow roads, limited space)
 - ✓ Equipment (age, reliability of distributors and rollers)



2016 Dust Abatement Program

Dust Abatement Program

- ✓ **78.58 Centerline miles were treated**
- ✓ 1049 Centerline miles of gravel roads in EPC
- ✓ Profile roads and ditches; 4% to 6% crown
- ✓ 6,570 gallons of mag and 75,000 gallons of water to prep and apply dust abatement for one mile
- ✓ Average cost per season \$260,000 for mag
- ✓ \$15,000 per mile; start to finish
- ✓ Challenges
 - ✓ Dry drought like conditions
 - ✓ Hauling water
 - ✓ Equipment availability



2016 Graveling Program

Graveling Program

- ✓ **9.13 Centerline miles**
- ✓ **Challenges**
 - ✓ Dry drought like conditions
 - ✓ Hauling water
 - ✓ Equipment availability (aging graders and tractors)
 - ✓ Availability of quality gravel
 - ✓ Experience
- ✓ **Grader upgrades must continue**
 - ✓ Received 3 new machines in 2016
 - ✓ 26 machines available; 23 operators
- ✓ **Provided training on new M-Series grader**
 - ✓ Joy stick controls
 - ✓ Grader simulator
 - ✓ Hands on training



2016 Bridge Deck Replacement

Bridge Deck Replacements

- ✓ Established/trained crew and purchased/received equipment
- ✓ **5 Bridges**
 - ✓ Meridian Road
 - ✓ Calhan Highway North
 - ✓ Hodgen #1
 - ✓ Hodgen #2
 - ✓ Elbert Road



2016 Snow Removal Program

Snow Removal Program

- ✓ Crews rotate every two weeks on call
 - ✓ On call status all year long 365 days
- ✓ **17 events in calendar year 2016**
- ✓ Training week
- ✓ Media Day
- ✓ Installed salt/sand storage facility
- ✓ Looked at new methods/technologies
 - ✓ Zonar; pre and post trips, gather data, efficiencies
 - ✓ Equipment modernization
 - ✓ Training



Customer Service Requests

- ✓ **Grader Maintenance**
- ✓ **Pot Holes / Patching**
- ✓ **Signs / Signals**
- ✓ **Drainage Maintenance**
- ✓ **Dead Animal Pickup**
- ✓ Illegal dumping in ROW
- ✓ Tree Trimming
- ✓ Crack Sealing
- ✓ Adopt A Road (trash pickup)
- ✓ Road Sweeping
- ✓ Mowing
- ✓ Bridge Maintenance
- ✓ Shoulder Maintenance
- ✓ Curb / Gutter/ Sidewalk (Concrete)
- ✓ Mailboxes
- ✓ Remove Signs in ROW
- ✓ Dust Control
- ✓ Traffic Counts
- ✓ Guardrail Maintenance
- ✓ Spray for Weeds
- ✓ Road Striping
- ✓ Sand Barrel Maintenance

2016 Customer Service Requests



Vehicles and Equipment

Truck, 2016, International, Tractor

Truck, 2016, International, Tractor

Truck, 2016, International, 7600, Tandem

Truck, 2016, International, 7600, Tandem

Truck, 2016, International, 7600, Tandem

Truck, 2016, International, 7600, Tandem

Truck, 2016, International, 7600, Tandem

Truck, 2016, International, 7600, Tandem

Utility Body, Bridge Deck Crew

Truck, 2016, Int'l, 7600, 4x4 Patch Truck

Grader, 2016, CAT, 12M3

Grader, 2016, CAT, 12M3

Grader, 2016, CAT, 12M3

Excavator, 2016, Gradall

BROOM 2016 ELGIN BROOM BEAR, Street Sweeper

Trailer, 2016, Marathon Wide Crack Sealer

Blower, 2016, Stihl, BG-86

Demo Saw, 2016, Stihl, TS420

2016 Vehicle/Equipment Purchases



2016 Safety Initiatives

Vehicle Color

Increased Vehicle Lighting

Enhanced Graphics

Safety Gear

✓ Jackets

Zonar



Total FTEs

✓ 134

New Hires

- ✓ 29 new employees in 2016
- ✓ 6/29 Bridge deck replacement crew
- ✓ 10/29 Entry level positions
 - ✓ 4 FTE - backfilled current vacancies

Promotions

- ✓ 12 internal

Seasonal Hires

- ✓ 10 - summer months
- ✓ Duties - chip sealing, mowing, flagging

FTEs to start 2017

- ✓ 3 vacancies - 131/134
- ✓ Highway Superintendent/Drainage Crew/grader Crew

2016 Manning/Staffing



2016 Training

Established training academy

- ✓ 4 Graduates
- ✓ 5 new entry -levels in training
- ✓ Acquire CDLs; in-house training program

LTAP

- ✓ 3 graduates in 2016
- ✓ Provide facility/classroom at Akers for classes

Flagger certification

- ✓ All employees internal certification

Annual Snow Removal Training

In-house heavy equipment trainer

What is LTAP?

Local Technical Assistance Program (LTAP) was established in 1981 as the Rural Technical Assistance Program (RTAP). It is the primary way that the Federal Highway Administration (FHWA) helps local transportation agencies learn about maintaining and improving their roads, innovative methods and materials and ways to work smarter. LTAP strives to bridge the gap between research and practice by conducting training sessions and demonstrations and by serving as a clearinghouse for information related to state-of-the-art technology in the construction and maintenance of roads and bridges.

Colorado LTAP is sponsored by The Federal Highway Administration, Colorado Department of Transportation and University of Colorado at Boulder

Questions

2050 Regional Transportation Plan



GOALS SURVEY

Introduction



PPACG works to plan for the region's future transportation needs by developing a long range transportation plan. The long range plan considers social, demographic and technological trends that may impact transportation needs 30+ years into the future.

We need you to help us develop goals for our 2050 Regional Transportation Plan by telling us which issues are most important to you, or may be the most impactful in the future.

This survey includes opportunities to comment on goals from the 2040 Plan approved in 2014, as well as several spaces to add your own goals and views on the future of transportation.

Open Ended Questions



Q1: What do you want to see happen with Transportation in our region in the next 30+ years?

Q2: We know technology is changing our world, including roads, bike and transit options. What things do we need to make sure are considered when we are planning for 2050?

Input on Previous Goals



As part of the previous long range plan (the 2040 Plan), we identified 13 transportation goals for the Pikes Peak Region through public and committee input.

Please look through the next three questions and tell us which goals we need to keep and what else we may need to add. Feel free to add comments, suggest new goals, or suggest alternative language for any of the goals in sections 6 and 7.

Remove, Low Priority, High Priority?



- Maintain or improve the condition of existing transportation infrastructure.
- Improve the operation of transportation systems and services to enhance emergency response, minimize travel times, and maximize service quality of all modes of commercial and private travel throughout the region.
- Prioritize funding of transportation projects and programs that are highly cost-effective over their life-cycle.
- Enhance transportation system connectivity within and between types of travel to help improve accessibility for all travelers.
- Improve safety for all travelers.

Remove, Low Priority, High Priority?



- Increase resiliency and redundancy of the transportation system (i.e. reduce the percentage of transportation corridors at high risk without a viable alternative route).
- Ensure transportation system investment benefits are equitably distributed to minorities and citizens with disabilities, low incomes, and/or have other special needs.
- Reduce transportation-related adverse impacts to communities, neighborhoods, natural environments, and areas identified for cultural and/or historical preservation.
- Improve economic vitality and freight movement in the region by enhancing the transportation system.
- Incentivize revitalization in already-developed areas.

Remove, Low Priority, High Priority?



- **Improve, protect and mitigate impacts to critical habitats and connecting corridors suitable for threatened, endangered, and imperiled species.**
- **Minimize the amount of transportation-related storm-water runoff and pollutants that enter the region's water bodies.**
- **Reduce transportation-related greenhouse gas and federally-designated criteria air pollutant emissions.**

Edits and New Goals



Q6: Please share any new goals you would like to see added for the 2050 Plan or suggest modified language for the existing goals.

Q7: After considering the 2040 goals, what would you like to see for regional long term transportation goals going forward? What are we missing or what needs to be updated?

Questions & Comments?



PLEASE HELP US SHARE THE SURVEY!