

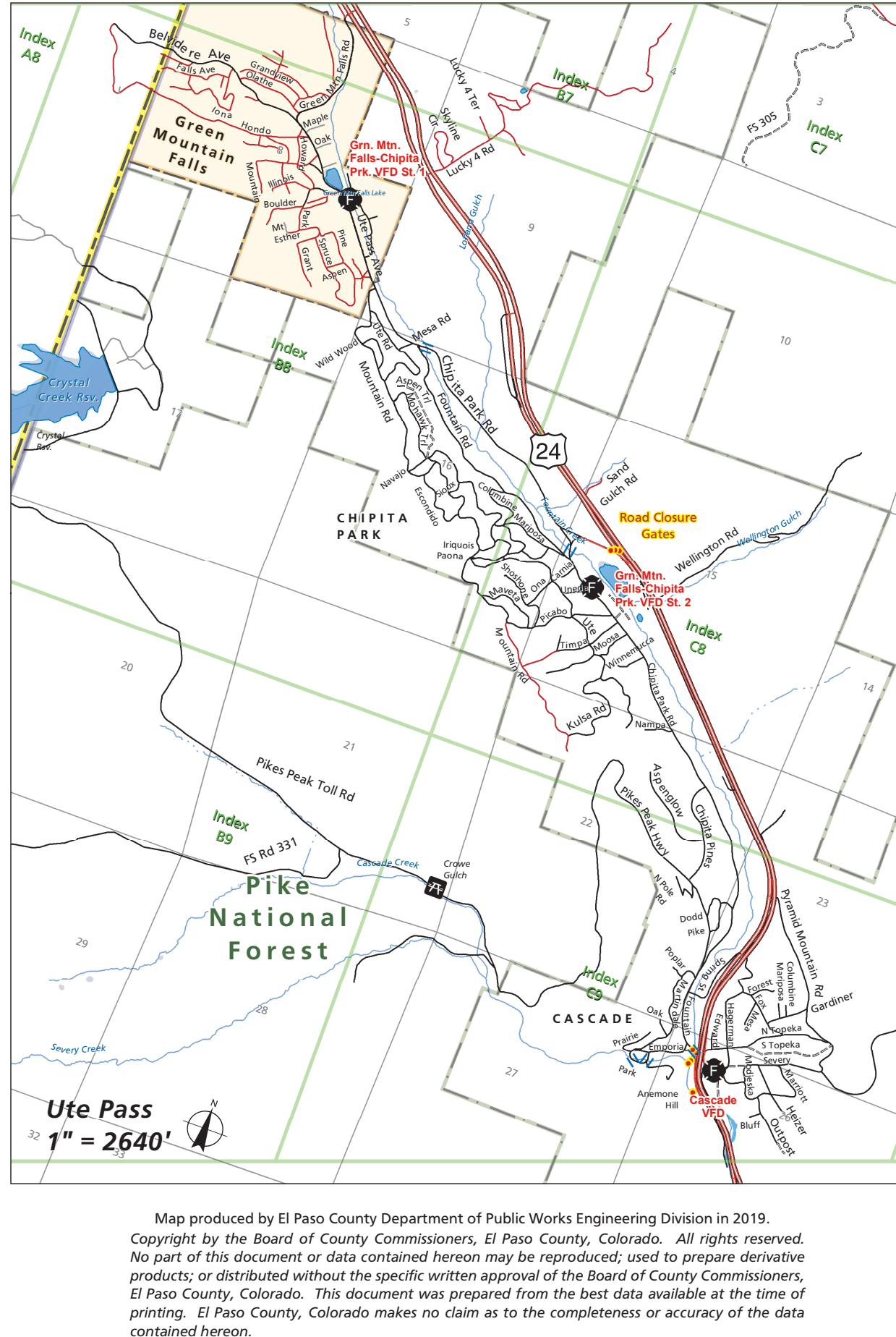
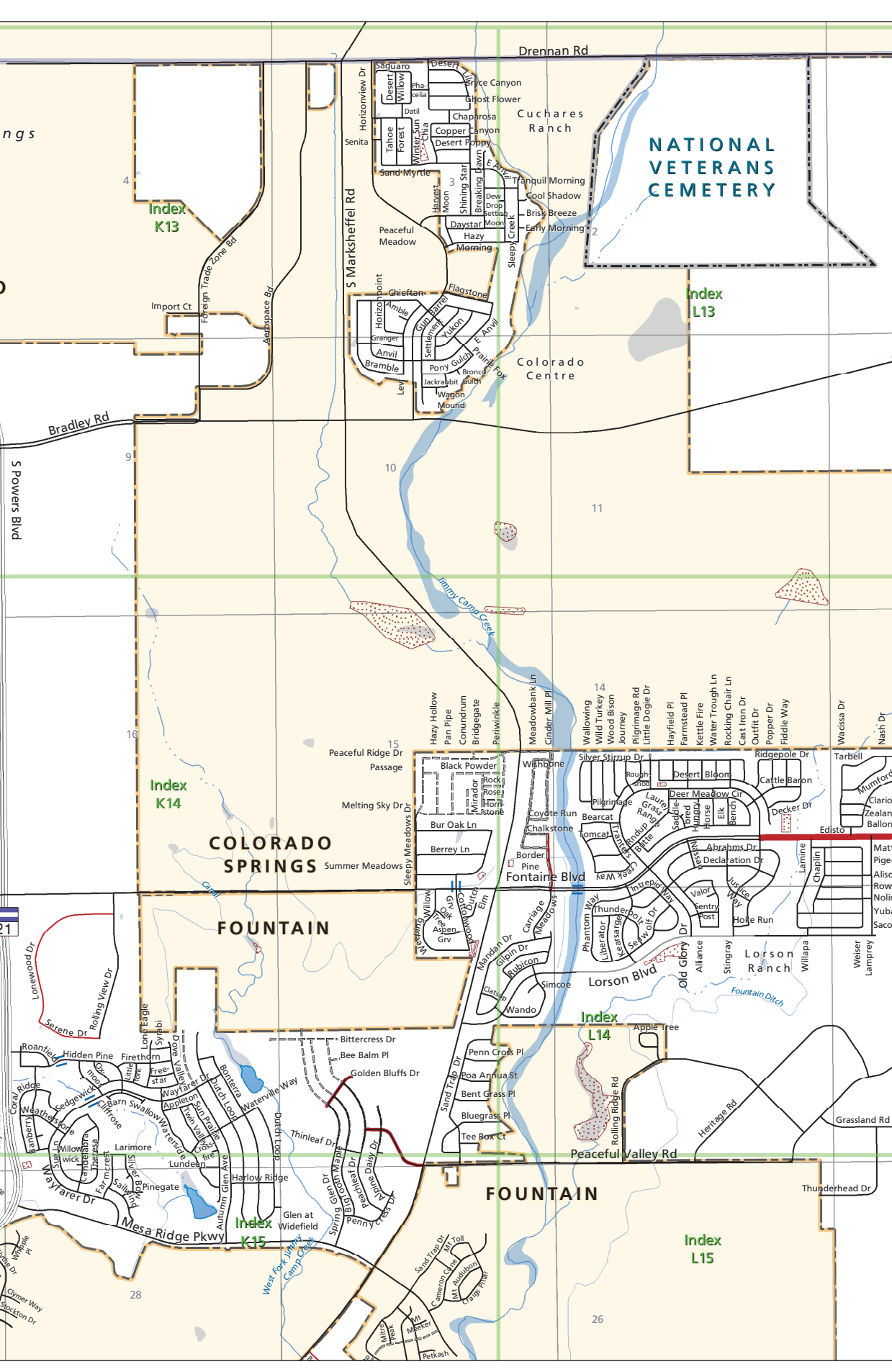
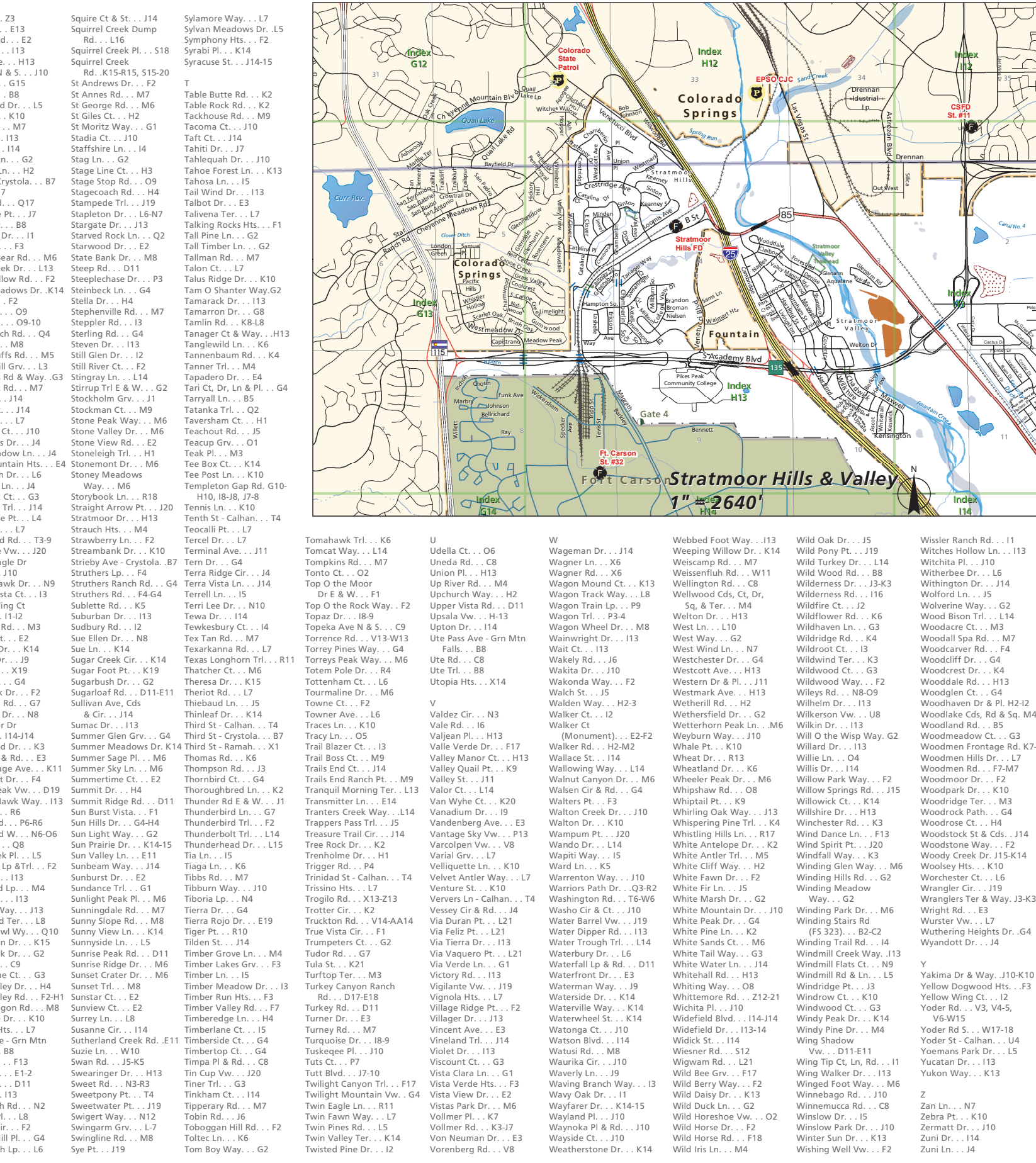
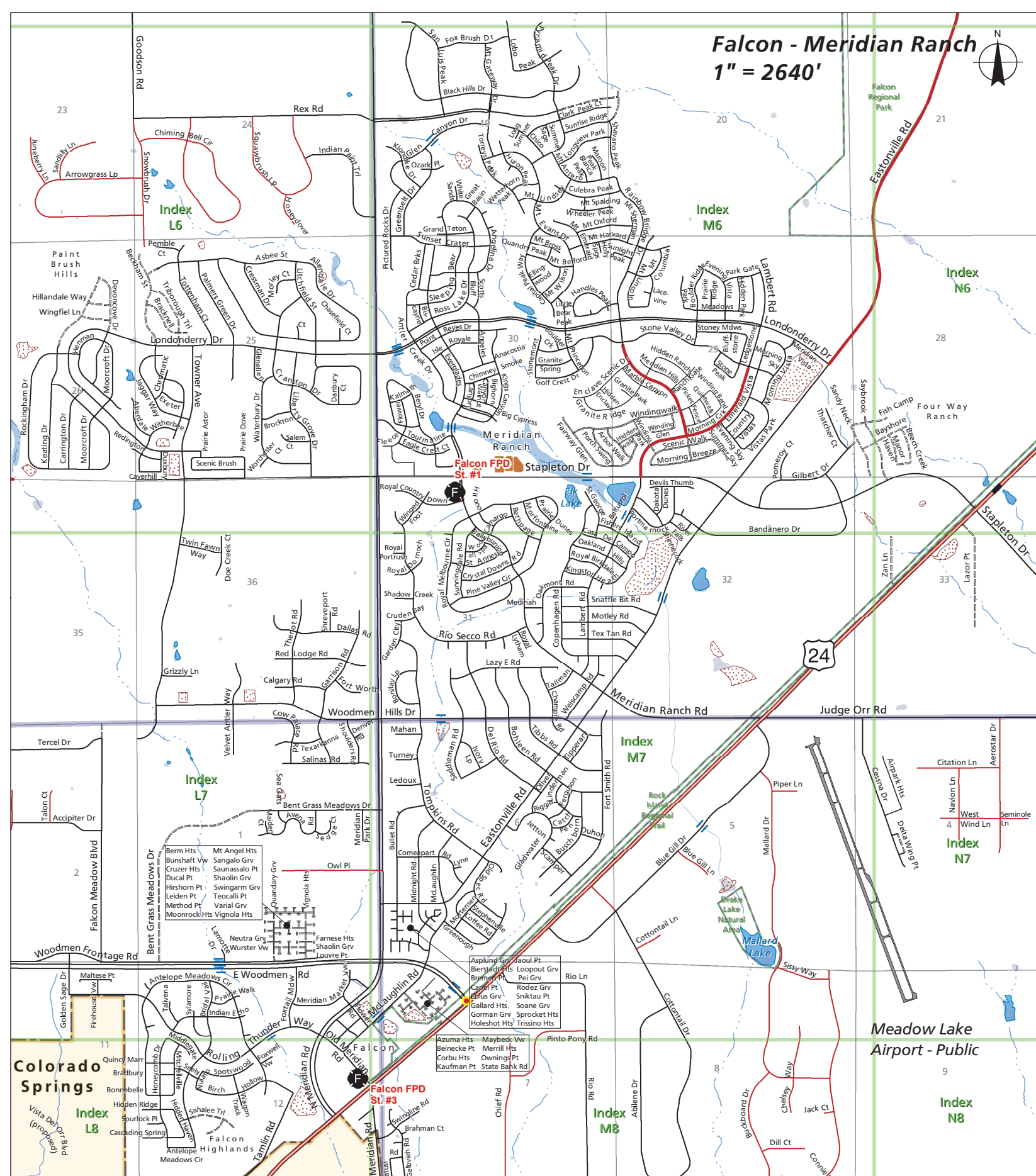
Index and Grid

Index A-1 through Index S-36

Legend:

- Blue - Road
- Red - Right-of-Way
- Green - Forest
- Yellow - Open Land
- Grey - Urban/Developed
- Blue/Green - Water
- Black - Boundary

Scale: 1" = 2640'



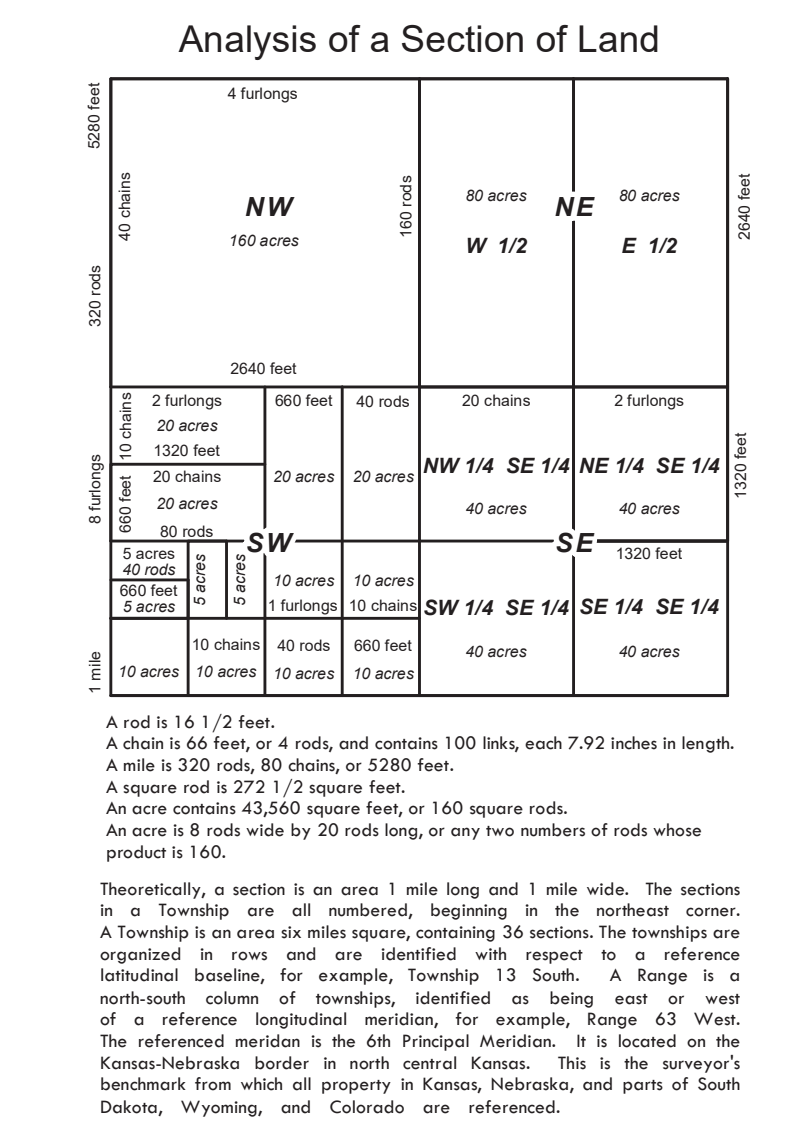
El Paso County

Unimproved and primitive roads are generally passable only in fair weather and intended for use by 4-wheel drive high clearance vehicles. Roads which are primitive and unimproved often provide access to scenic and recreation areas. Motorists planning to travel these roads, particularly on unimproved roads like those in the Rampart Range and Pike Peak foothills west of Colorado Springs, are advised to make inquiries concerning road conditions. Generally the Pike Peak foothills are considered steep. Use first or second gear when driving up or down long, steep grades. Use your brakes sparingly.

EMERGENCY ASSISTANCE CALL 911

Non-Emergency Numbers for Public Safety Assistance:

- El Paso County Sheriff (719) 584-4224
- El Paso County Sheriff (719) 390-5555
- www.elpasoco.gov
- El Paso County Sheriff (719) 382-8555
- Mantoloking Police (719) 685-8087
- Monument Police (719) 481-2523
- El Paso County Sheriff (719) 584-4224
- Citizen Service Center (719) 520-6666
- Assessor (719) 520-9600
- Clerk & Recorder (719) 520-6022
- Board of Commissioners (719) 520-7529
- County Engineer (719) 520-7529
- 200 S. Cascade Ave., Suite 1000, Colorado Springs, CO 80903
- (719) 520-7276



EL PASO COUNTY COLORADO

HIGHWAY MAP

El Paso County became a territorial county in 1876. Fifteen years later Colorado became a state in 1876. El Paso County covers 130 square miles. The county ranges from 5,052 feet on the southern border at Chico Creek to 14,110 feet at the summit of Pike Peak. The mean temperature is 49 degrees Fahrenheit and the yearly precipitation is 15.5 inches. The average yearly snowfall is 39 inches and the average amount of sunny days is 247. We are a region with very low humidity levels.

The Pike Peak area consists of thriving communities with tourism, advanced technology, light manufacturing, sports, military camps, and space (defense) operators ranking as key industries within the economy of the region. El Paso County is currently the second most populated county in the state of Colorado. With inclusion of incorporated city populations, we are estimated to have 699,232 citizens in 2017. Since 2000, El Paso's population has grown by more than 77,000 people. Rapid recent development has, however, not displaced a long history of agriculture, livestock raising, and mining.

With over 150,000 acres (230 square miles) of open space, El Paso County is also a year round sports paradise. Military camps, military space (defense) facilities, skiing, equestrian and rodeo sports, mountain climbing, hiking, golf, sailing, United States Olympic & Paralympic Training Centers, and other recreational facilities are just a few of the many recreational opportunities available in El Paso County, Colorado. This document was prepared from the best data available at the time of printing. El Paso County, Colorado makes no claim as to the completeness or accuracy of the data contained hereon.

EL PASO COUNTY BOARD OF COMMISSIONERS