

## Appendix B. LITERATURE REVIEW SUMMARY

NOTE: The full Literature Review document contains additional details and links to these documents.

Name of Plan (Year Published)	Description	Key Safety Components	Relevance to El Paso County Local Road Safety Plan
2020-2023 Colorado Strategic Transportation Safety Plan (2020)	Three-year plan to identify key safety needs in Colorado to be used to guide investment decisions. Plan developed in collaboration with other agencies. Identifies emphasis areas (i.e., high priority areas identified for safety improvement).	<ul style="list-style-type: none"> <li>• Set 3-year objectives to address safety needs for reductions of fatal, injury, and non-motorized crashes</li> <li>• Vision and mission statements</li> <li>• Trends in key performance targets</li> <li>• Four types of emphasis areas</li> <li>• 15 high-priority (Tier-1) strategies identified with an emphasis on collaboration and effectiveness</li> </ul>	<ul style="list-style-type: none"> <li>• Statewide objectives may be relevant to El Paso</li> <li>• Collaborative approach to identifying emphasis areas may be useful in El Paso County</li> <li>• Statewide performance metrics highlight unique safety needs relevant to a county with a mixed urban/rural environment such as El Paso</li> <li>• Relevant emphasis areas and supporting strategies and actions can be adopted or customized</li> <li>• Identifies state safety partners</li> <li>• Opportunities to engage with the state on specific strategies</li> </ul>
Colorado Moving Toward Zero Deaths (2020)	Statewide program implementing the principles of the Vision Zero and Towards Zero Death program.	<ul style="list-style-type: none"> <li>• Vision Zero and Towards Zero Death Safety Partners</li> <li>• Included as a core value in the state's Strategic Highway Safety Plan</li> </ul>	<ul style="list-style-type: none"> <li>• May provide opportunities to support Vision Zero and Towards Zero Death in El Paso County</li> <li>• Relevant emphasis areas and supporting strategies and actions can be adopted or customized</li> <li>• Identifies state safety partners</li> <li>• Opportunity to engage with the state</li> </ul>
City Limits: Setting Safe Speed Limits on Urban Streets (2020)	Guidance document for cities to implement principles of Vision Zero and Towards Zero Death through reduced speed limits.	<ul style="list-style-type: none"> <li>• National perspective on speeding related crashes (esp. serious injuries and fatalities)</li> <li>• Focus on urban crashes</li> <li>• Specific guidance for replacing percentile-based method of setting speed limits with a systems based approach</li> </ul>	<ul style="list-style-type: none"> <li>• Highlights limitations and opportunities of current methodologies in use to set speed limits</li> <li>• Guidance on addressing speed limits that contribute to crashes</li> <li>• Particularly relevant to urban areas although guidance could be applied county-wide</li> </ul>
Colorado Safety Program (2020)	Implementation of the CDOT Whole System Safety Initiative.	<ul style="list-style-type: none"> <li>• Safety grants</li> <li>• Safety planning (i.e., Strategic Transportation Safety Plan, Strategic Highway Safety Plan)</li> <li>• Data</li> <li>• Safety initiatives</li> <li>• Quick resources</li> </ul>	<ul style="list-style-type: none"> <li>• Grants may be available to support activities in El Paso County</li> <li>• Data resources could support analysis in El Paso County</li> <li>• Safety initiatives could be tailored to El Paso County, or El Paso could partner with the state in implementing specific initiatives</li> </ul>



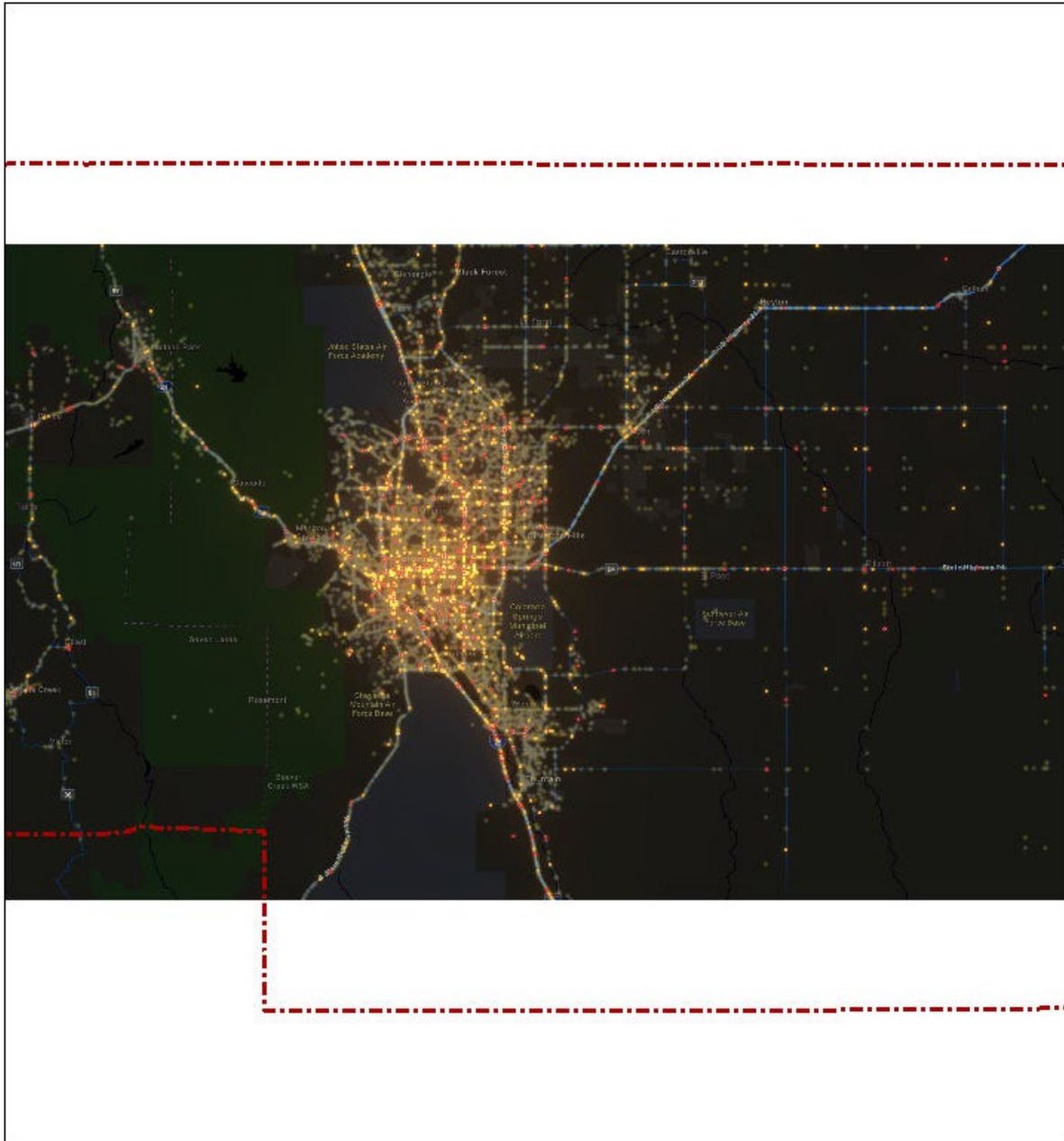
Name of Plan (Year Published)	Description	Key Safety Components	Relevance to El Paso County Local Road Safety Plan
Drive Smart Colorado (2020)	Organization in Colorado Springs that manages a variety of safety education programs and is funded by the Keeps Kids Alive Drive 25 program.	<ul style="list-style-type: none"> <li>• Extensive resources on educational campaigns</li> </ul>	<ul style="list-style-type: none"> <li>• Drive Smart Colorado could be a partner in driver's education programs throughout El Paso County</li> <li>• Excellent collection of resources on safety initiatives both in El Paso and the state</li> </ul>
Vision Zero Network (2020)	Website with resources on Vision Zero and Towards Zero Death objectives.	<ul style="list-style-type: none"> <li>• Case studies on achieving the visions of Vision Zero and Towards Zero Death</li> <li>• Resources on tools (focus on cities) to reduce speed</li> </ul>	<ul style="list-style-type: none"> <li>• Provides resources (some of which have been summarized in this document) on managing speeds to achieve Vision Zero and Towards Zero Death objectives</li> <li>• Resources on a network of cities who may be able to provide insight into their experience implementing Vision Zero and Towards Zero Death objectives</li> </ul>
Colorado FY20 Highway Safety Plan (in previous years called CDOT's Integrated Safety Plan) (2019)	Describes progress toward key safety performance measures adopted by the state of Colorado. Provides information on ongoing statewide safety initiatives throughout the state.	<ul style="list-style-type: none"> <li>• Identifies program areas, countermeasures, and planned activities to advance the state's progress toward achieving key safety measures</li> <li>• Identifies safety challenges in El Paso County relative to the rest of the state</li> </ul>	<ul style="list-style-type: none"> <li>• County-to-county comparison provides insight into the unique challenges in El Paso County</li> <li>• Identifies current county and statewide safety program areas</li> </ul>
Colorado Commercial Vehicle Safety Plan for the Federal Motor Carrier Safety Administration's Motor Carrier Safety Assistance Program Fiscal Years 2018 – 2020 (2019)	Plan developed in accordance with Federal grant requirements for the Motor Carrier Safety Assistance Program (MCSAP) that focuses on the safety of commercial motor vehicles (CMV).	<ul style="list-style-type: none"> <li>• Summarizes crash statistics for CMV in the state by type of crash</li> <li>• Detailed summary of costs associated with implementing MCSAP</li> </ul>	<ul style="list-style-type: none"> <li>• Performance measures in use for aspects of the MCSAP could be adapted for El Paso County</li> <li>• May identify potential targets for partnership and outreach for CMV</li> <li>• Details on the MCSAP CMV definition can be adapted for consideration in El Paso County contributing factors or emphasis areas</li> </ul>
Pikes Peak Area Council of Governments Long Range Transportation Plan (2019)	The Long Range Transportation Plan includes safety as one of its major goal areas.	<ul style="list-style-type: none"> <li>• Regional safety emphasis areas are identified</li> <li>• Identifies a recommended approach to the safety issue: Safety Conscious Planning</li> <li>• Strategies included to improve safety in the region</li> <li>• Safety analysis for intersections, roads, and half-mile road segments in the region</li> <li>• Crash data for El Paso and Teller Counties summarized</li> </ul>	<ul style="list-style-type: none"> <li>• Strategies included in the plan could be adopted by El Paso County</li> <li>• Many of the areas identified as safety concerns fall within El Paso County</li> <li>• Identifies major crash trends in EL Paso and Teller Counties that may suggest opportunities for targeted outreach in El Paso County</li> </ul>



Name of Plan (Year Published)	Description	Key Safety Components	Relevance to El Paso County Local Road Safety Plan
El Paso Strategic Plan 2017-2021 (safety section) (2017)	The El Paso County Strategic Plan identifies safety as one of the county plan's major goal areas; spending on law enforcement is the county's largest spending category.	<ul style="list-style-type: none"> <li>• Safety is included in two of the county's goals</li> <li>• Strategies and objectives toward achieving those goals are included in the plan</li> </ul>	<ul style="list-style-type: none"> <li>• Coordinating with county commissioners on goals, strategies, and objectives may result in efficiency gains</li> </ul>
Reducing Speeding-Related Crashes Involving Passenger Vehicles (2017)	Report by the National Transportation Safety Board that focuses on the role that speeding plays in motor vehicle crashes.	<ul style="list-style-type: none"> <li>• Identifies key challenges associated with changing speed limits and crash data where speeding may be an issue</li> <li>• Identifies countermeasures that are shown to be more effective at addressing speeding</li> </ul>	<ul style="list-style-type: none"> <li>• May provide insight into crash data for El Paso County</li> <li>• Data-driven approach could be adapted to El Paso County</li> <li>• Identifies countermeasures that may have strong application toward achieving 'Toward Zero Deaths' objectives</li> </ul>
Major Transportation Corridor Plan (2016)	Plan identifies projects in El Paso County's roadway improvement plan. Safety is highlighted in outreach and potential action items.	<ul style="list-style-type: none"> <li>• Safety identified as a key priority in mailed surveys: Community members indicated that safety should come first in planning future roadways and that planning should allow people to arrive safely rather than quickly</li> </ul>	<ul style="list-style-type: none"> <li>• Highlights community members' priorities for safety</li> <li>• Highlights example actions that the county could take in support of safety</li> </ul>
Colorado Strategic Highway Safety Plan (2014)	The plan identifies eight emphasis areas for safety improvements from 2015-2019.	<ul style="list-style-type: none"> <li>• Emphasis areas and strategies to accomplish safety targets</li> <li>• Identifies key metrics in each emphasis area</li> </ul>	<ul style="list-style-type: none"> <li>• Criteria for selecting strategies could be used in El Paso County</li> <li>• Emphasis areas may have overlap in El Paso County</li> </ul>



# Appendix C. PPACG TRAFFIC CRASHES MAP



11/21/2022

