

URBAN AREA
Index Map

2023 El Paso County MS4 Permit Area - Urban Areas
CDPS Stormwater Management Program
CDPS Permit No. COR-090011

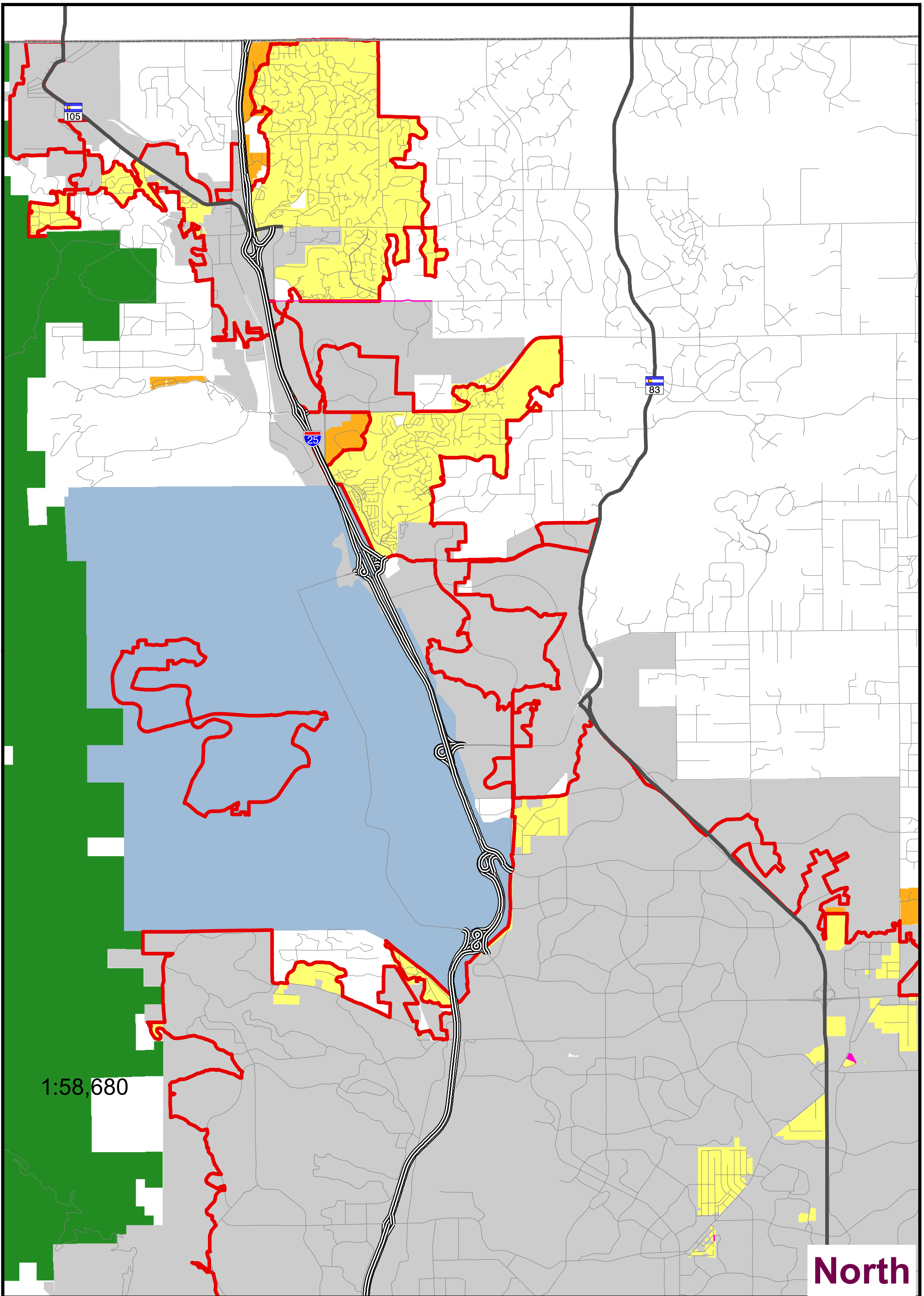
Legend

- | | | |
|-------------------------------|------------------------|--------------------------|
| 2023 Existing MS4 Permit Area | 2010 Census Urban Area | 2022 Incorp Area Changes |
| 2020 County Growth Areas | Incorporated Areas | |

REVISED DUE TO ANNEXATIONS
THRU DECEMBER 2021

Program area boundary based on 2010 Census
Urbanized Areas from U.S. Census Bureau
cartographic products online. Adjustments to fit
El Paso County basemap coordinates and
judgments on excluding small low density areas
were made by El Paso County Staff.

COPYRIGHT 2022 by the Board of County
Commissioners, El Paso County, Colorado.
All rights reserved. No part of this document,
or data contained herein may be reproduced,
used to prepare derivative products, or distributed
without the specific written approval of the Board of
County Commissioners, El Paso County, Colorado.
This document was prepared from the best data
available at the time of plotting and is for internal
use only. El Paso County, Colorado, makes no
claim as to the completeness or accuracy of
the data contained herein.



URBAN AREA
North Map

2023 El Paso County MS4 Permit Area - Urban Areas
CDPS Stormwater Management Program
CDPS Permit No. COR-090011

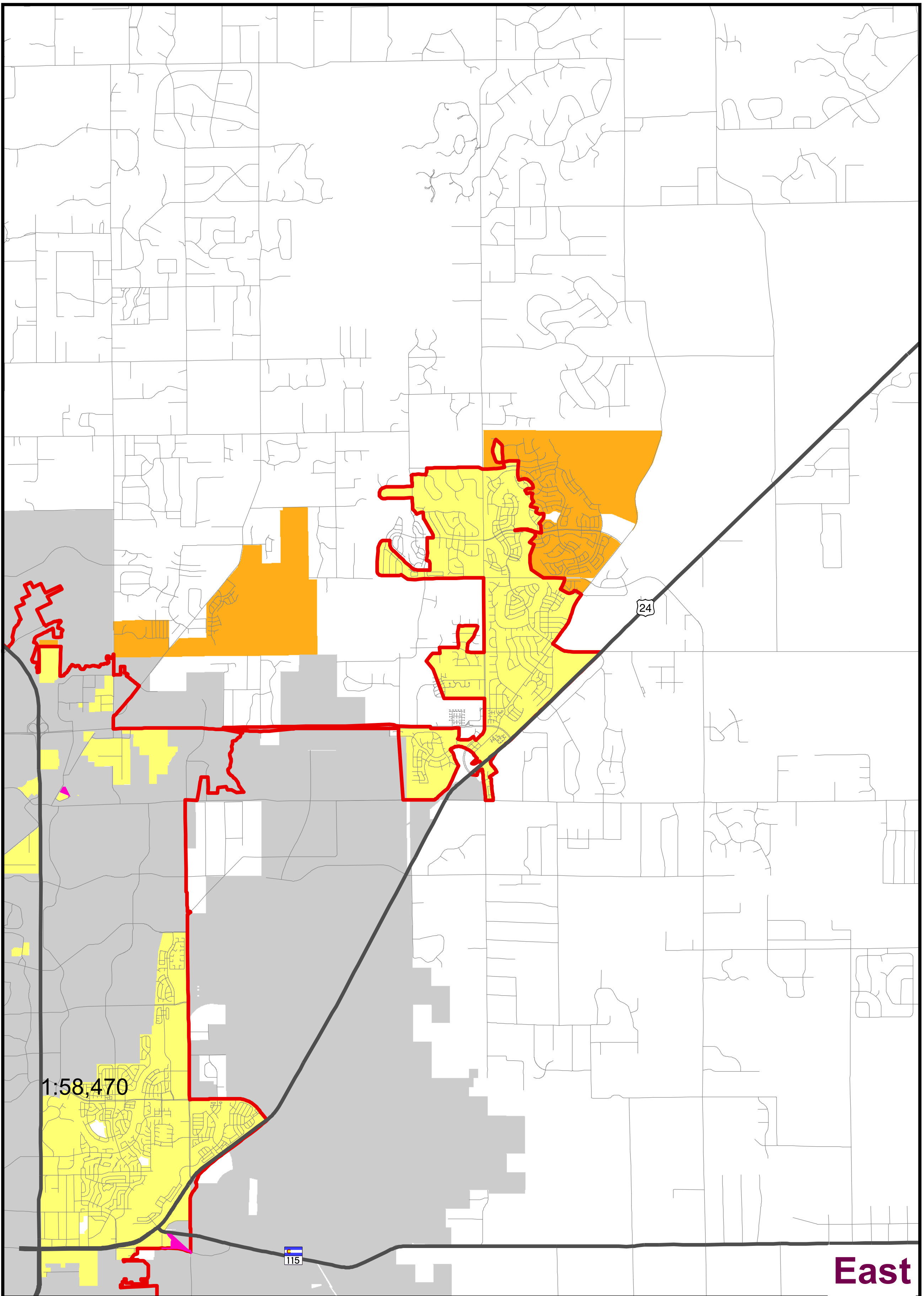
Legend

- | | | |
|-------------------------------|------------------------|--------------------------|
| 2023 Existing MS4 Permit Area | 2010 Census Urban Area | 2022 Incorp Area Changes |
| 2020 County Growth Areas | Incorporated Areas | |

REVISED DUE TO ANNEXATIONS
THRU DECEMBER 2021

Program area boundary based on 2010 Census
Urbanized Areas from U.S. Census Bureau
cartographic products online. Adjustments to fit
El Paso County basemap coordinates and
judgments on excluding small low density areas
were made by El Paso County Staff.






COPYRIGHT 2022 by the Board of County
Commissioners, El Paso County, Colorado.
All rights reserved. No part of this document,
or data contained hereon may be reproduced,
used to prepare derivative products, or distributed
without the specific written approval of the Board of
County Commissioners, El Paso County, Colorado.
This document was prepared from the best data
available at the time of plotting and is for internal
use only. El Paso County, Colorado, makes no
claim as to the completeness or accuracy of
the data contained hereon.



URBAN AREA
East Map

2023 El Paso County MS4 Permit Area - Urban Areas
CDPS Stormwater Management Program
CDPS Permit No. COR-090011

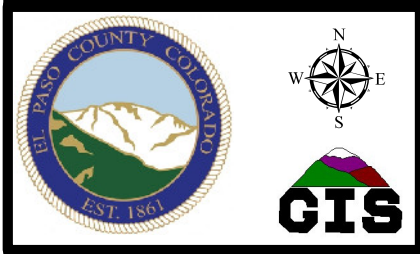
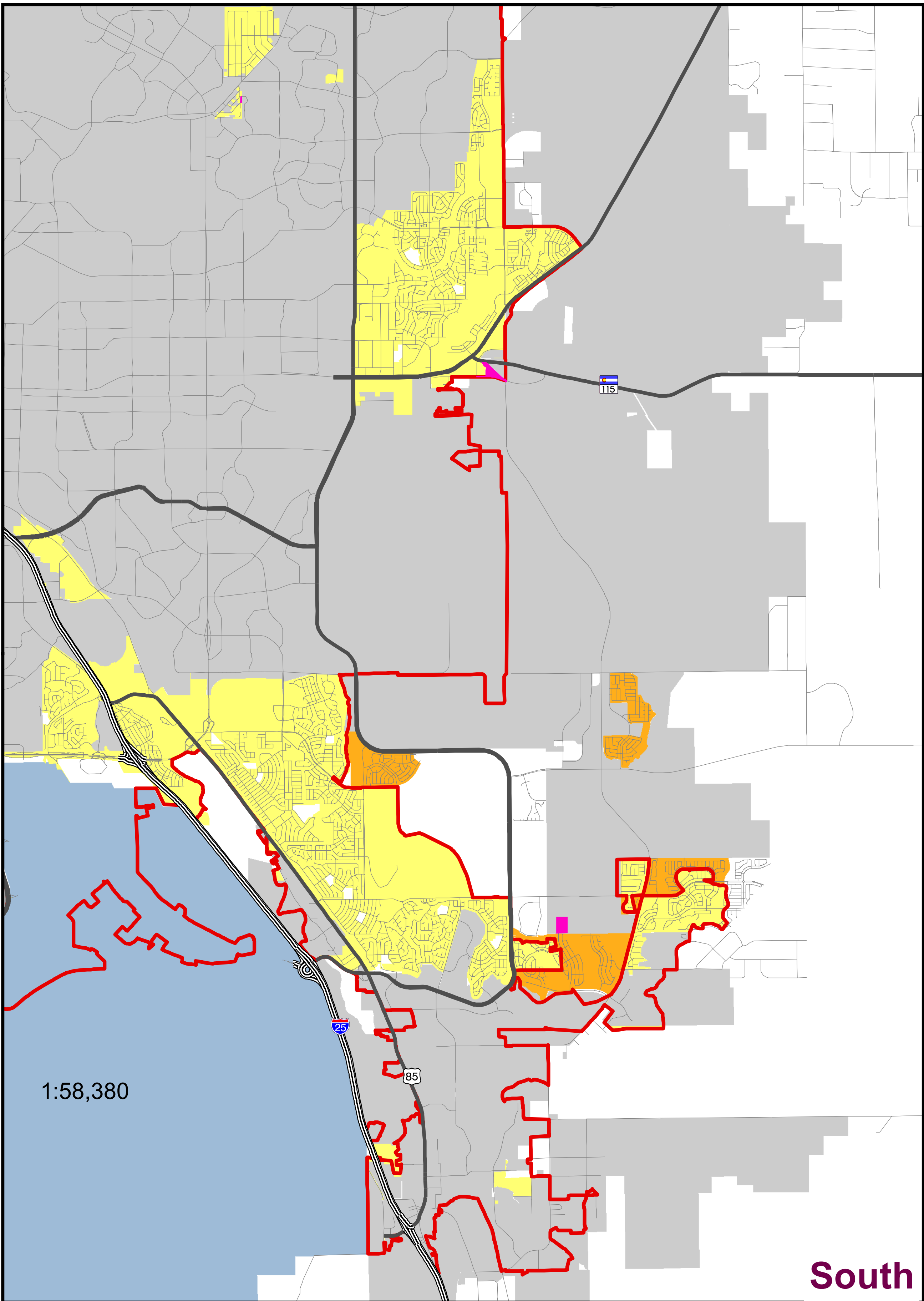
Legend

- | | | |
|---|---|--|
|  2023 Existing MS4 Permit Area |  2010 Census Urban Area |  2022 Incorp Area Changes |
|  2020 County Growth Areas |  Incorporated Areas | |

REVISED DUE TO ANNEXATIONS
THRU DECEMBER 2021

Program area boundary based on 2010 Census
Urbanized Areas from U.S. Census Bureau
cartographic products online. Adjustments to fit
El Paso County basemap coordinates and
judgments on excluding small low density areas
were made by El Paso County Staff.

COPYRIGHT 2022 by the Board of County
Commissioners, El Paso County, Colorado.
All rights reserved. No part of this document,
or data contained hereon may be reproduced,
used to prepare derivative products, or distributed
without the specific written approval of the Board of
County Commissioners, El Paso County, Colorado.
This document was prepared from the best data
available at the time of plotting and is for internal
use only. El Paso County, Colorado, makes no
claim as to the completeness or accuracy of
the data contained hereon.



URBAN AREA
South Map

2023 El Paso County MS4 Permit Area - Urban Areas
CDPS Stormwater Management Program
CDPS Permit No. COR-090011

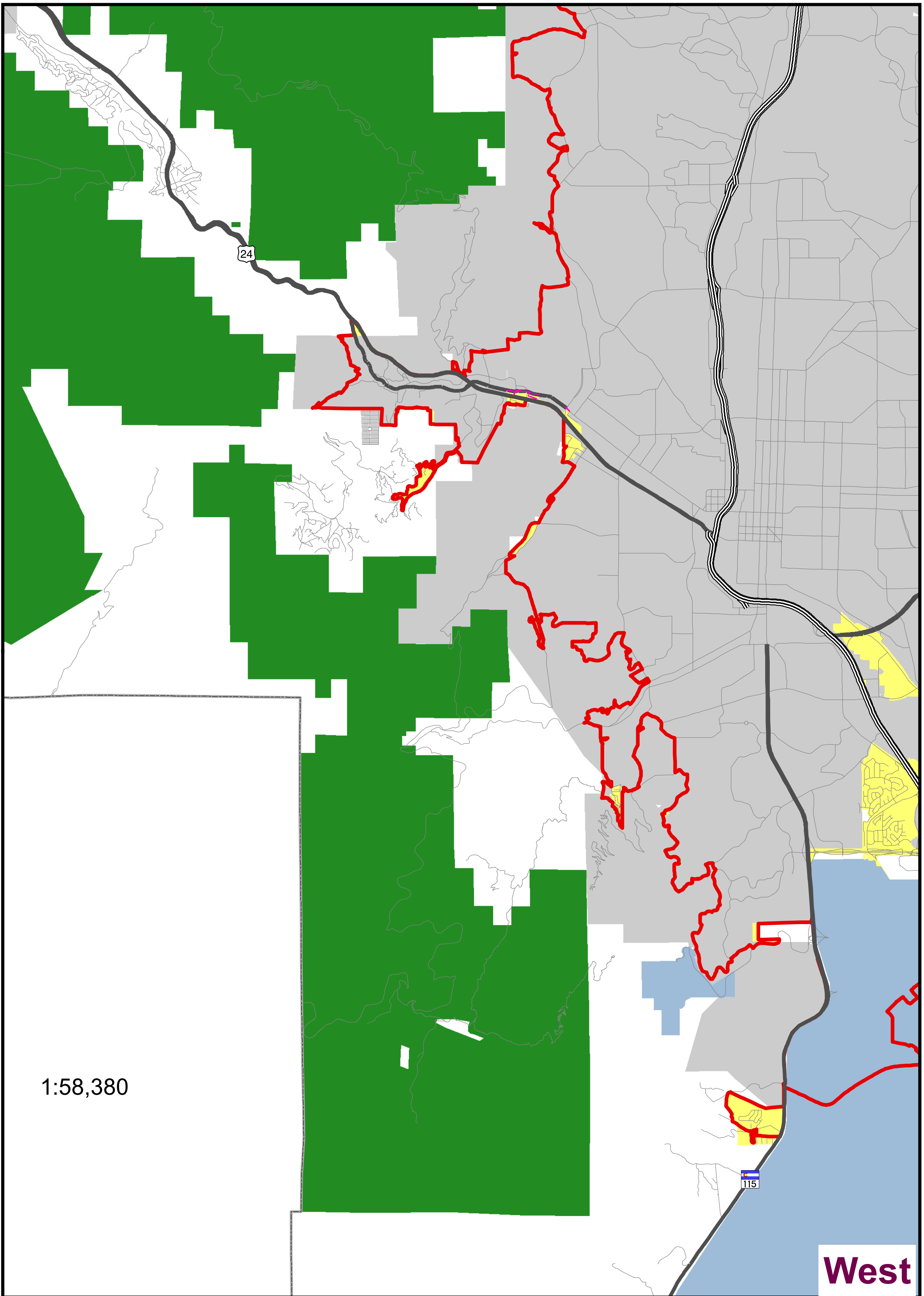
Legend

- | | | |
|-------------------------------|------------------------|--------------------------|
| 2023 Existing MS4 Permit Area | 2010 Census Urban Area | 2022 Incorp Area Changes |
| 2020 County Growth Areas | Incorporated Areas | |

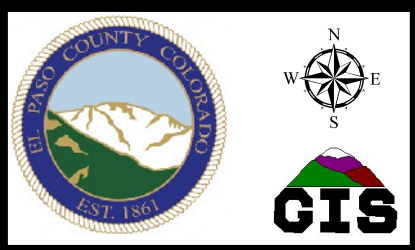
REVISED DUE TO ANNEXATIONS
THRU DECEMBER 2021

Program area boundary based on 2010 Census
Urbanized Areas from U.S. Census Bureau
cartographic products online. Adjustments to fit
El Paso County basemap coordinates and
judgments on excluding small low density areas
were made by El Paso County Staff.

COPYRIGHT 2022 by the Board of County
Commissioners, El Paso County, Colorado.
All rights reserved. No part of this document,
or data contained herein may be reproduced,
used to prepare derivative products, or distributed
without the specific written approval of the Board of
County Commissioners, El Paso County, Colorado.
This document was prepared from the best data
available at the time of plotting and is for internal
use only. El Paso County, Colorado, makes no
claim as to the completeness or accuracy of
the data contained herein.








1:58,380



URBAN AREA
West Map

2023 El Paso County MS4 Permit Area - Urban Areas
CDPS Stormwater Management Program
CDPS Permit No. COR-090011

Legend

- | | | |
|---|---|---|
|  2023 Existing MS4 Permit Area |  2010 Census Urban Area |  2022 Incorporation Area Changes |
|  2020 County Growth Areas |  Incorporated Areas | |

REVISED DUE TO ANNEXATIONS
THRU DECEMBER 2021

Program area boundary based on 2010 Census
Urbanized Areas from U.S. Census Bureau
cartographic products online. Adjustments to fit
El Paso County basemap coordinates and
judgments on excluding small low density areas
were made by El Paso County Staff.

COPYRIGHT 2022 by the Board of County
Commissioners, El Paso County, Colorado.
All rights reserved. No part of this document,
or data contained hereon may be reproduced,
used to prepare derivative products, or distributed
without the specific written approval of the Board of
County Commissioners, El Paso County, Colorado.
This document was prepared from the best data
available at the time of plotting and is for internal
use only. El Paso County, Colorado, makes no
claim as to the completeness or accuracy of
the data contained hereon.